

Performing arts students and faculty celebrate the opening of a u Pa C, their new home.

Board of trustees Chairman t homas F. Motamed '71, a my Maiello Hagedorn '05 (Hon.), and President r obert a . Scott celebrate the opening of the a lice Brown early l earning Center.

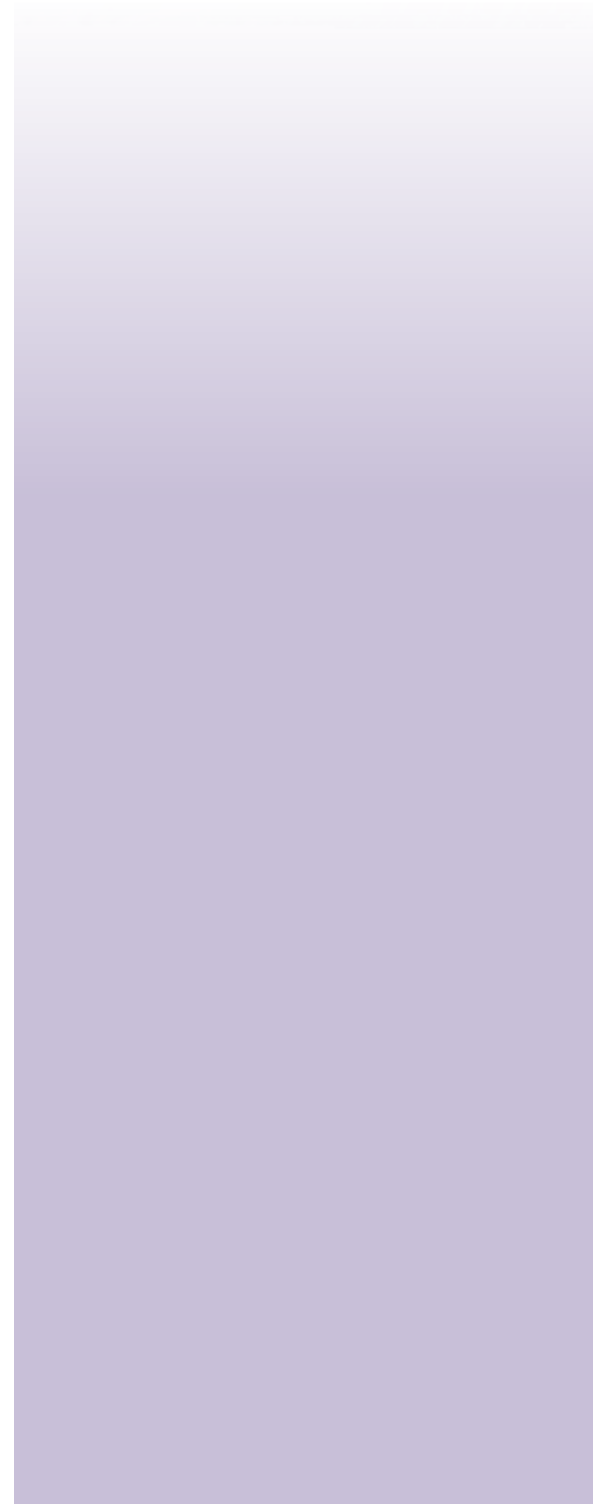
President r obert a . Scott and d onna de Varona, first president of the Women's Sports Foundation, show their gratitude to swimming phenomenon Michael Phelps for speaking on campus.

President r obert a . Scott with political pundit Mary Matalin, who spoke on campus with husband James Carville, on the cusp of the November 2008 election

Performing arts department Chair Nicholas Petron M.a. '70 with a l and Nan l arson, parents of r eNt scribe Jonathan l arson '82, at a delphi's gala performance of the Broadway blockbuster

Frank r ansome '50 with President r obert a . Scott at Homecoming 2008

AV



Phelps

Famed swimmer and Olympic gold medal record-holder Michael Phelps kicked off the release of his new book, *Nobody Will Ever Succeed*, on December 9, 2008 at a well-attended event at Adelphi. Nearly 2,000 fans packed the arena of the Center for Recreation and Sports for the event, "Dream, Plan, Reach: An Evening with Michael Phelps."

Sports enthusiasts of all ages, some bearing signs and T-shirts emblazoned with such slogans as "Phelps Phan," jammed the new arena, thrilled to have the opportunity to meet the Olympic swimmer who, with eight gold medals, shattered records for both all-time gold medals won and gold medals won in a single Games at the 2008 Beijing Olympics.

No fan was left sitting as the Olympic star took his seat next to Donna de Varona, first president of the Women's Sports Foundation, former Olympic swimmer, and sports commentator, who conducted an informal question and answer session with the new champion.

In the candid interview, Mr. Phelps reflected on growing up with Attention-Deficit / Hyperactivity Disorder and the effort it took to achieve his goals in Beijing. In his most difficult race, the 200-meter fly, his goggles began to fill with water, forcing him to count his strokes in order to know where he was in the pool.

"I just had to swim through it," Mr. Phelps said.

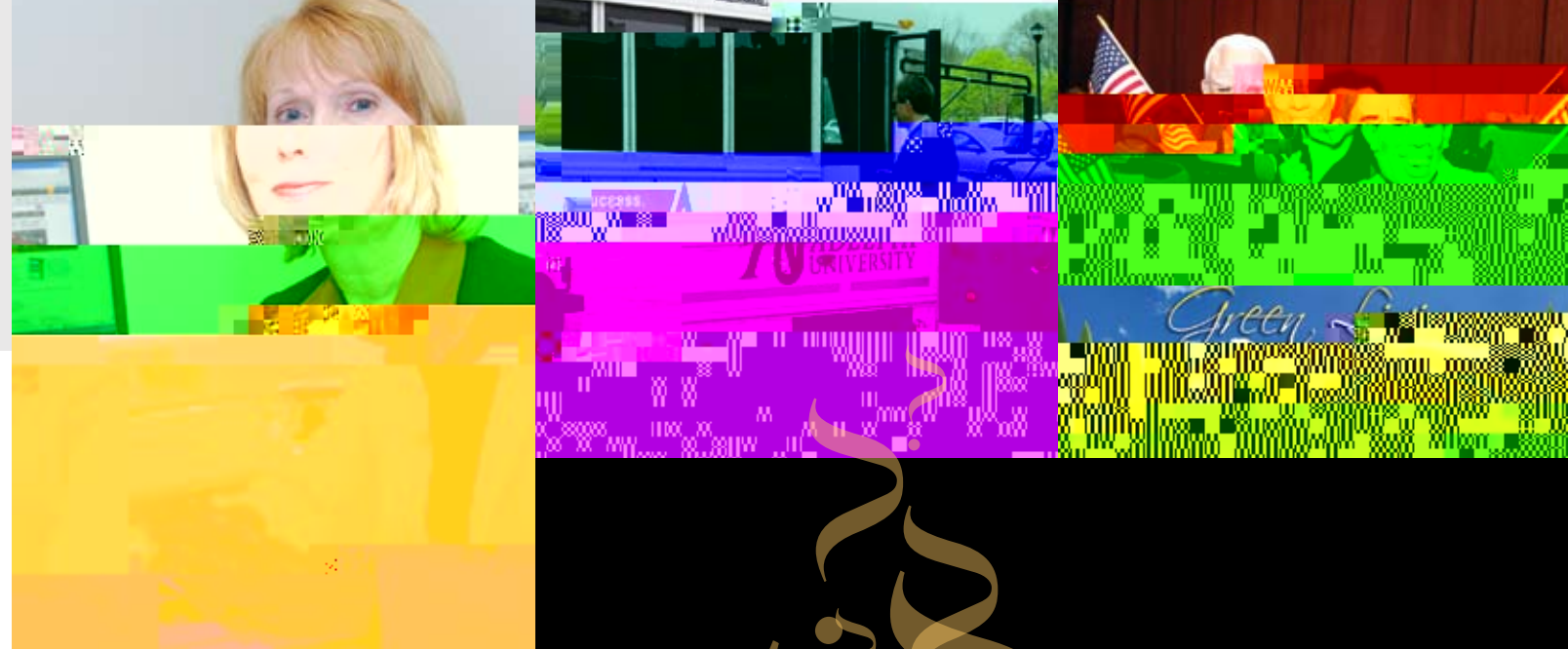


Above: Michael Phelps speaking at a delphi in december

Below: Fans fill a delphi's new arena for Michael Phelps talk

Winning that race proved that his hard work, including an extra workout every Sunday, had paid off. Just recovering from a whirlwind international tour of events, he will focus on several new events, and possibly, he conceded, even take off

Financial Aid 101



adelphi director of Student Financial Services Sheryl Mhopulos

What are the most common myths and misconceptions about financial aid?

Most students and families automatically come to the conclusion that a private university always costs more than a public one. Students and families should complete the Free Application for Federal Student Aid (FAFSA) and compare the financial aid packages against the cost of attendance to determine what their actual out-of-pocket costs will be.

What factors does adelphi consider when determining a student's financial aid package?

W-04-1.TcS q814005 (s)7(i)17(d)-3(e)-5(ry210.) (fr[W)81f)26(d(a)9(w)-5(f 3[W)81f)26(w(s)7(W)81f)26(rc)-5(e(i)3c)-1ea)-9(26 T187(W)81f)26(0

< A QGM Know



Mary Matalin and James Carville

CREATIVE CUPS

TAKE CENTER STAGE

What better way to show support for breast cancer than to design bras for a worthy cause? This was the rationale behind Creative Cups, a thought-provoking exhibition and fundraiser to benefit the Adelphi NY Statewide Breast Cancer Hotline & Support Program. Nearly 250 bras from across the country poured in during the competition, according to event co-organizer

and(d)-19(i)-29(r)-20(e)-14 c)-15 tr (o)5fe Adelphira39(p)7(h)-4(i)11(Db)-15(e)-13(s)-3(i)3(g)-27(c)-5 z
rt-5 z5{S37(t)-21(u)-3Ad)-13ile-5 z5ftr-5 z5Mr fTter(h)-3(e)10(l)9(p39(i)3(n)-1(g t)-6(o d)-13(e)-13(s)-3(i)3(g)-27(na0 b)-3(r)-14(s f)-1(or a(b)-3(r)-20(e)-7(a)-11(s)-11(m)15()TJ5 Tc 0.12 -1.263 Td[c]-07(a)4)3(n)4)3(c)411(e)530(r)w5iv-2-3(o)350(r)iny and
nOeber25a7e,(g)-37(r)-14(a39(p)7(h)-4(i)11(d)-13(e)-13(s)-3(i)3(g)-27(n(p)-1(r)-17(o)1(g)-37(r)-14(a)-14(m)15()TJ5 Tc 00012 -1.263 Td[r]415lT)-36un th se9p se ctu
the creations toMiashne,(h)-3(e)-15(r f)-1(or)-41m(e)-15)
nsmrur,(w)-1(h)-3(s w)-12(a)-11(s(e)-7(a)-52(g)-21(e)-15(r t)-6(o(t)-18(a)-19kv)12en(p)47(a)-12(r)-34(t i)3(n)15()TJ0.034 -1.263 Td[or]-12(g)-14(a)-8(n)1(f)-12(z-97(i)3(n)-1(g t)1(h)-3(o e)-12(v)8(e)-6(n)7(h)-3.)TJ/Span ActualText (f)BDC -0.005 T

AU PAC's highly anticipated opening was commemorated with a ribbon-cutting ceremony on September 15, 2008. In their speeches, Board of Trustees Chairman Thomas F. Motamed '71 and

S
t
R
A

Judy Fenster gained firsthand exposure to life's injustices as a struggling singer in Manhattan in the 1970s that would later inform her career as a social worker and an academic. Dr. Fenster, an associate professor of social work at Adelphi, moved to the Big Apple with dreams of becoming an established chanteuse after graduating from Northwestern University with a bachelor's degree in speech and theatre.

Armed with ambition and a set of pipes honed since her musical childhood in Atlanta, Judy Fenster (nee Saul) and her singing partner performed everything from Diana Ross covers and current pop tunes to original material in "every dive there was," she says.

"I remember my father coming to see us, and he was just so proud and just so horrified," Dr. Fenster says. "It was dark, and in a lesbian bar, you know...we were so poor, we had no money."

Like many youthful ambitions, dreams of stardom were soon replaced with the stark reality of poverty.

"One night (my singing partner and I) played this gig, and we had all this equipment that we had to bring home, and you had to lug your own equipment back then...and we just didn't have enough money between the two of us to pay for the cab ride home," she says. "The poor cab driver, he took us the rest of the way home for free. So we would go out and we would split one dinner between us, and we were really struggling artists, just like the cliché."

Dr. Fenster penned a song that closely mirrored the duo's lives as fledgling singers, appropriately coined "Life in the Big Apple," that became her favorite to perform.

*The e i o e, o e o be gi l, o r e d i b o o l e, o r g h e, d
b e, a o r be l d b, o e o be A t t l e, b o k i g o*

Robert Bradley is a mathematician and philosopher who studied the two disciplines as a Rhodes Scholar at University College, Oxford University.

He is also a finger-picking, bluegrass-loving musician who just might be inclined to treat an interested student or visitor to an impromptu jam session in his office, on a guitar signed by the likes of Grammy-nominated bluegrass musician Norman Blake, best known for playing on Bob Dylan's albums *Like a Rolling Stone* and *Blowin' in the Wind*.

"It's beef steak when I'm hungry, Lord, it's whiskey when I'm dry, It's a greenback when the times are hard, And sweet heaven when I die," he sings in the style associated with Appalachian roots music. "Let her go, let her go, God bless her, though she roams over land and sea. She may search this wide world all over, and never find a friend as true as me."

As a teenager growing up in Montreal, Canada, Dr. Bradley was drawn to the early '70s folk scene proliferated by American singer-songwriters such as Bob Dylan and their Canadian counterparts, including Gordon Lightfoot.

Over the years, Dr. Bradley's repertoire expanded to include playing the blues during his days as a graduate student and performing more complex classical arrangements, such as Mozart's Requiem and Bach's Mass in B minor, as a singer with Adelphi Chorus, a role he has held since 1990.

© 2016 The University of North Carolina at Chapel Hill. All rights reserved. This document is the property of the University of North Carolina at Chapel Hill and is not to be distributed outside the University without the express written permission of the University of North Carolina at Chapel Hill. This document is the property of the University of North Carolina at Chapel Hill and is not to be distributed outside the University without the express written permission of the University of North Carolina at Chapel Hill.

Will Green Be the New Black for Business?

Yti f~p njs %ms prsl %k0 vjs 0s %t szshyt s% rnyj %ht str ~%
yvj xlfynj %nfs %vj s gflpxlvj % txy %pj q%t %uvs l %t % rsi %
\ n%z v%z vrf %s %t yj wlvj w%si % tvj %w | iji %qsj y%
g ltr rsl %t % tvj %v xsl %zj %zj xnt s %k %z x f r s f g r y ~ %si %
js { n t s r j s y f a r u f h y %v %qj w s l %w i n t s f %h t s t r n % t i j q %

Associate Professor of Economics Mariano Torras



it SeeMS aSt HouGH tHiS VieW ruNS
CouNter to tHe VerY Core oF tHe
Pr eVail iNG aMer iCaN NotioN oF
tHe eFFiCieNCY oF Fr ee Mar ket S.

I think that is fundamentally what it is about, and again it goes (back to) how we define profit. Half of the profit equation is cost, and cost has traditionally just been what the businesses have to pay out of pocket. For very long, the consequences of their decisions and their behavior is not something they have (had) to pay for...So, it seems if we are going to continue relying on the profit motive, and I don't see any evidence that we are moving away from it, then something must be done to make whatever these costs are, these social and environmental costs, make them part of that bottom line, to internalize these externalities, so to speak.

This goes back to, for instance, the idea of imposing a tax on emissions or other types of pollution, but it's very complex. It's problematic...I have serious reservations with the idea of putting dollar values on a lot of the environmental services and functions esut verny



Kf hz q⁹ %/ln nap myx

C published the book, *Sadie*.

Advice: A Guide to the World of the Internet.
Feedback: The World of the Internet (New
York: Palgrave, 2008). He published the ar-
ticle, *Revisiting the World of the Internet*.

it's all about
your network

work



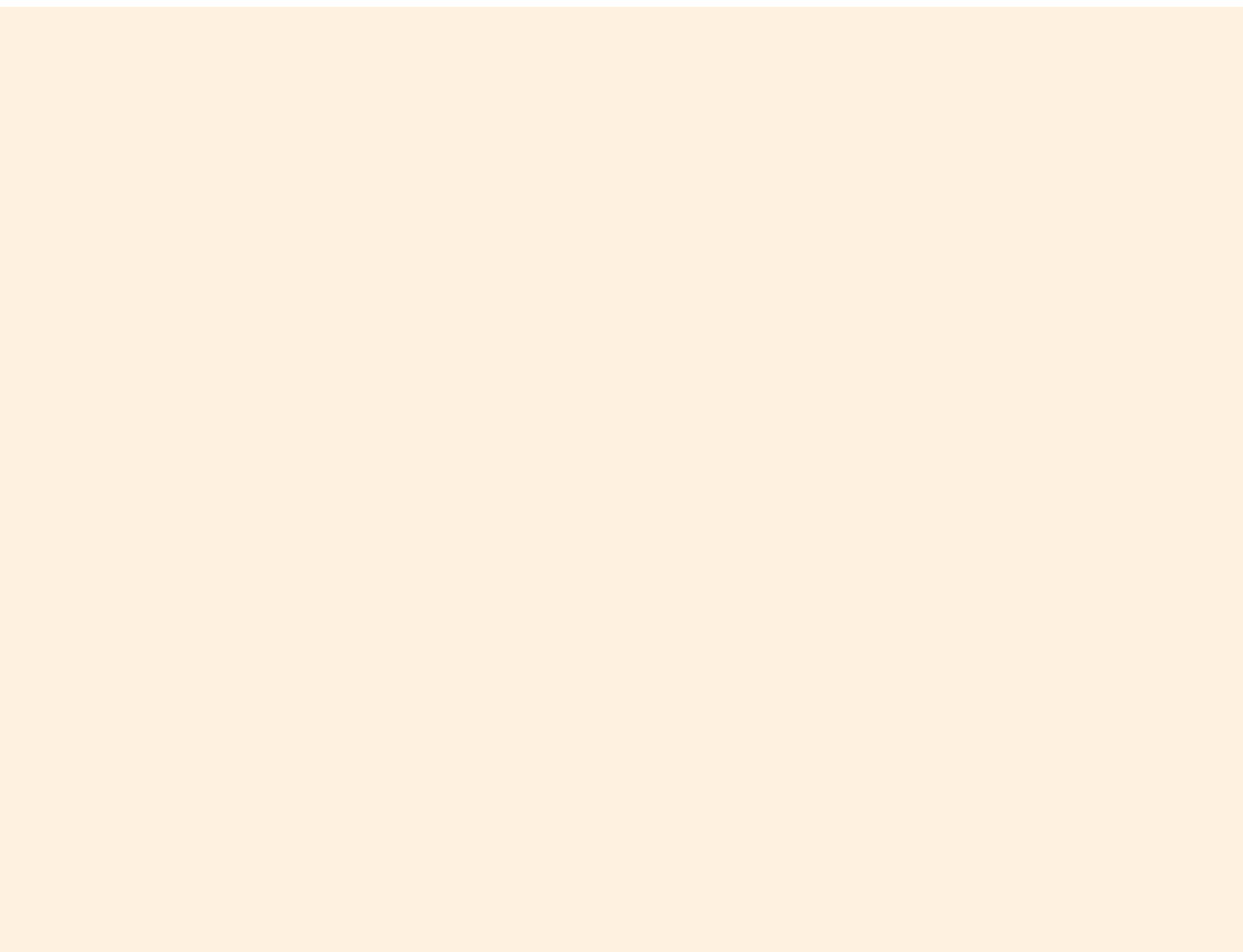
I never imagined they would be so welcoming and eager to help. In starting this process with a sense of apprehension, I failed to realize how approachable and down-to-earth many alumni truly are. They remembered being in my shoes. It was almost as if they saw a piece of themselves in me. And if it weren't for the Adelphi connection we shared, I don't think I would have had the opportunity to learn from experienced minds.

Such alumni connections set the bar for what I wanted to achieve during

ablht1-220-150-1-7(k)51TJ4(h)-3M(a)-y4(h)-3mton(h)-3rh-18J010(0

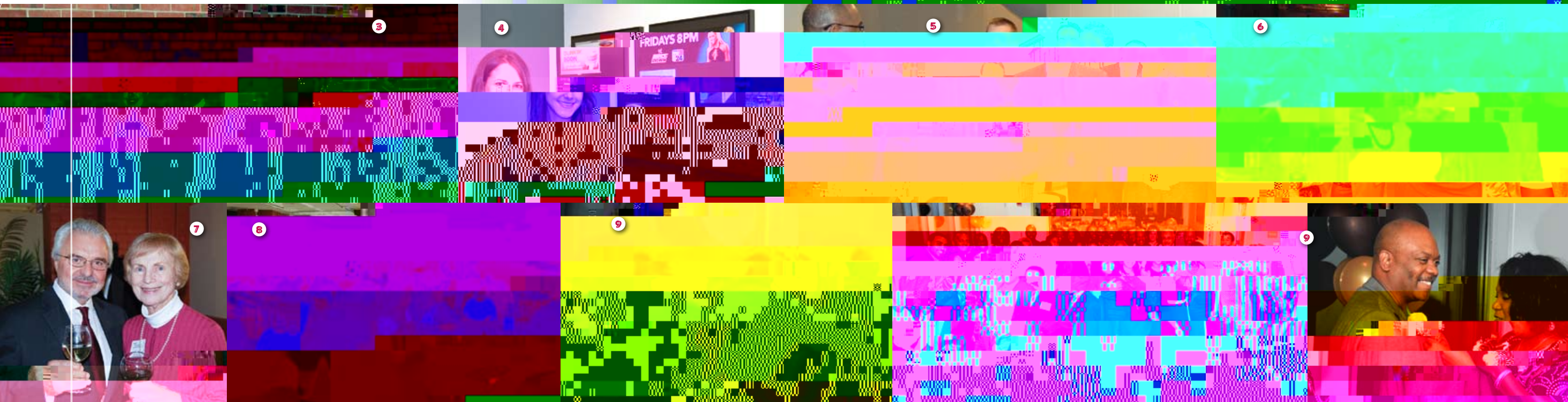
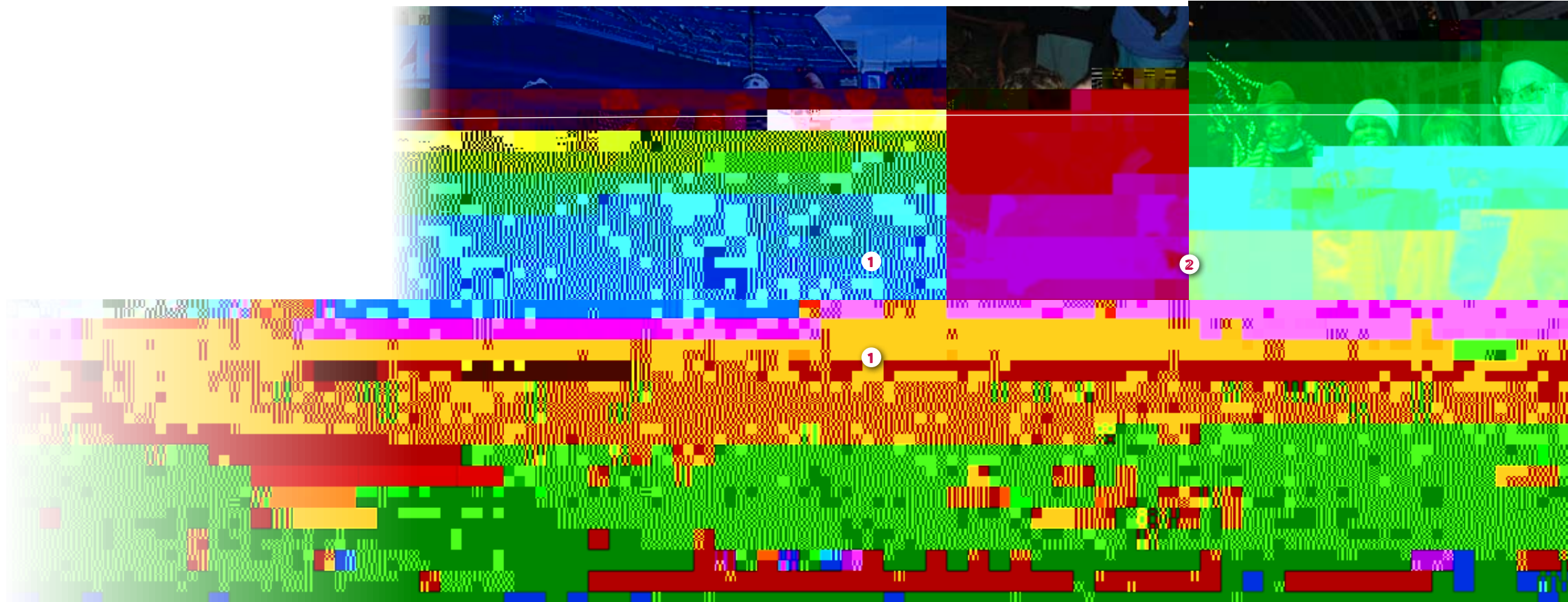
FIELD HOCKEY







to see more photos from recent alumni events,
visit [AZ .AD L H . D / H "AZZ .](#)



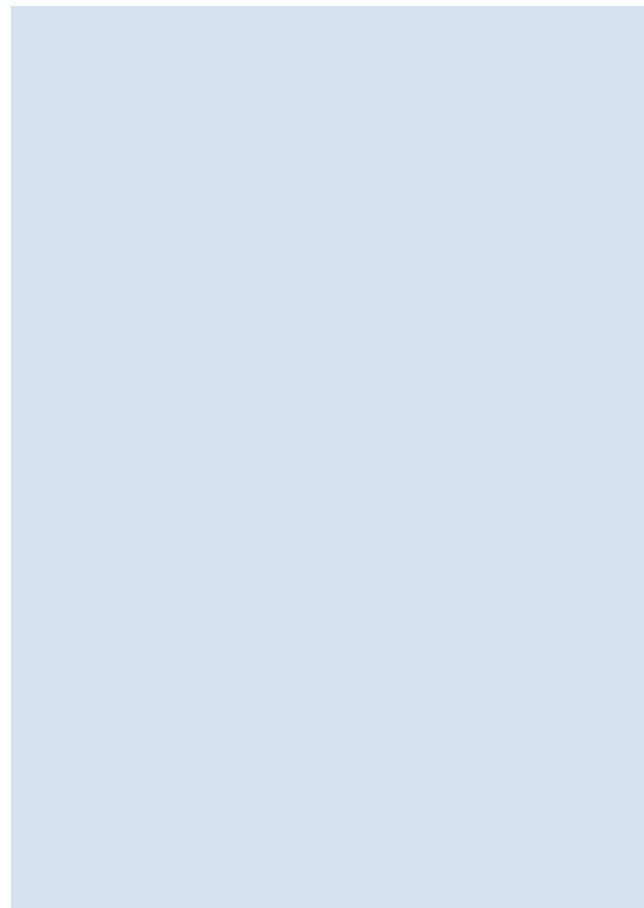
2008



Ade



The 20th annual Adelphi University Golf Classic, held on Monday, September 22, 2008, brought together alumni and friends for a spirited day on the green at Garden City's Cherry Valley Club. More than 60 foursomes teed off in the morning and afternoon in the annual fundraiser for student athletic scholarships, raising \$100,000. The day culminated in an awards dinner, honoring Gus Scacco '84, managing partner at AG Asset Management, with the 2008 President's Award for Outstanding Achievement and Friendship. A former Adelphi baseball player, Mr. Scacco served as team captain for two years.





T

C **B.B.A. '78** celebrated her 25th year as a private practice attorney.

D **B. . '79** was appointed chair of the biological sciences department at the State University of New York at Cortland.

B.B.A. '79 was appointed CFO of Chem RX Corporation.

C **B. . '80, . . . '83** has been working at Stony Brook University Hospital for 23 years.

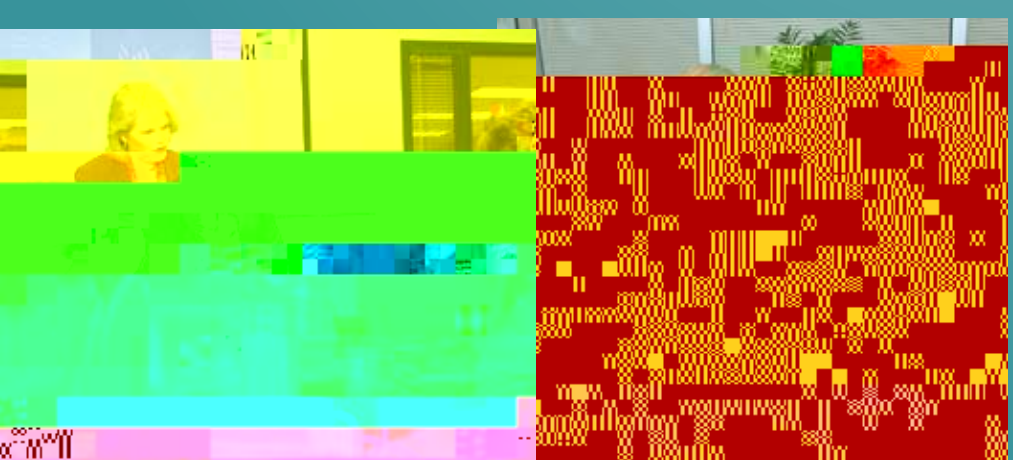
B. . '80, .A. '84 was included in *Orange Week*.

D **. . '80** was named in the Winners Section of *Newsday*. She is an assistant professor of mathematics at Suffolk County Community College, where she received the Governance Award for Academic Excellence and Service. She has taught at Suffolk County Community College for 28 years.

D **() B.B.A. '81** was promoted to alternate group manager of private lending at America Bank, Florida Division. She earned national top sales performance for 2007–2008. She earned an M.B.A. in legal compliance at Florida Atlantic University.


B.A. '82, . . . '84 opened The Music Academy for Special Learners in Ronkonkoma, New York, which offers one-on-one instruction in piano, keyboard, guitar, and art, as well as small group instruction in art and keyboard for children. For more information, please visit [www.cacad.org](#).

CACAD **B.C**
B.B.A. '82 joined **1984**



C **C** - **B.A. '89** is executive assistant to the provost at Richard Stockton College. She joined the board of trustees for the Galloway Community Charter School.

B.A. '89 published the book of poetry, *Li q' i e, Mig. iqb Bl'e: Fi . F e o be i 'de Fil.*.

The background features large, stylized, light blue letters 'AMU' in a serif font. The letters are semi-transparent, allowing the teal background to show through. The 'A' is tall and narrow, the 'M' is wide and short, and the 'U' is tall and narrow. The overall composition is clean and modern.

Mr. Saridakis traces his rapid rise to his Adelphi preparation.

“There were so many resources available to